

SINGLE/DOUBLE LEAF FIRE DOOR

30 MINUTE FIRE DOOR



Single or Double-leaf Fire Door for 30 min fire rating, meets with Israeli and International fire regulations, providing outstanding protection for various types of commercial and residential buildings, industries and institutions.

TECHNICAL SPECIFICATIONS

GENERAL DESCRIPTION

- Door leaf with two 0.8 mm thick galvanized steel casings and interior reinforcements.
- Intumescent gasket between door and frame.
- Fire rated hardware.
- Telescopic bottom insert for final height adjustment.

HARDWARE AND ACCESSORIES

- Anti - Panic Lock.
- Moveable lever door handles.
- Fixed handle, Panic bar or Push bar – optional.
- Hydraulic closer - optional.
- Door closing coordinator - for double door.

WINDOW DIMENSIONS (OPTIONAL)

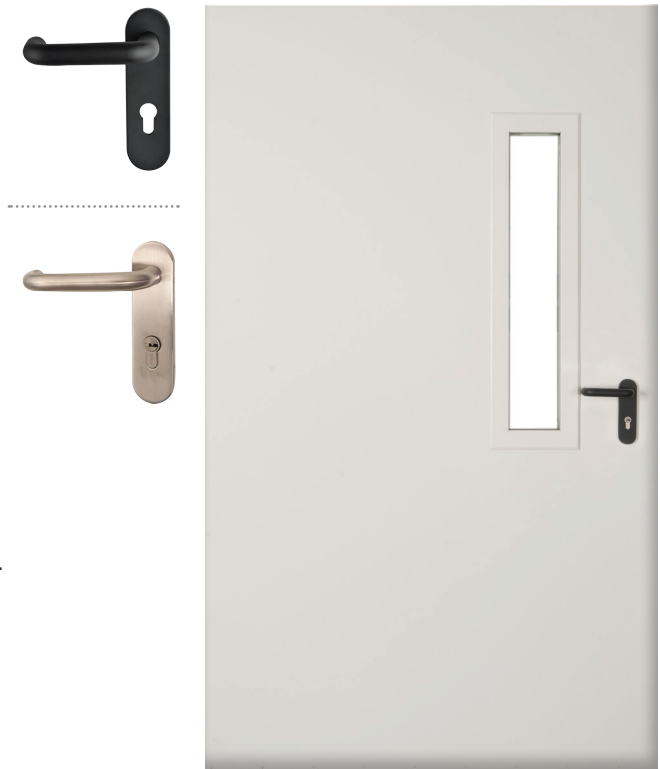
- 600x400 mm.
- 820x170 mm.
- Round 440 mm diameter.

DOOR FINISH

- PVC finish.
- Powder coating.

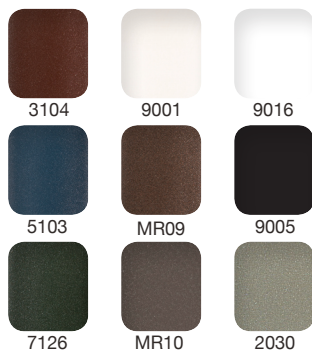
DIMENSIONS

- Maximum door leaf height (without bottom insert) – 2200 mm.
- Maximum door frame height – 2400 mm.
- Maximum moveable door width – 1140 mm.
- Maximum fixed door width – 1140 mm.
- Maximum double-leaf door frame width – 2360 mm.



DOOR FINISHES

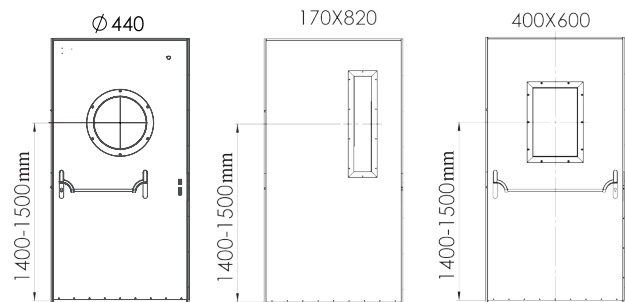
RAL Color Catalog



PVC Coating



Window Options



Additional door finishes available

* The colors are for illustration purposes only. The final color may vary.

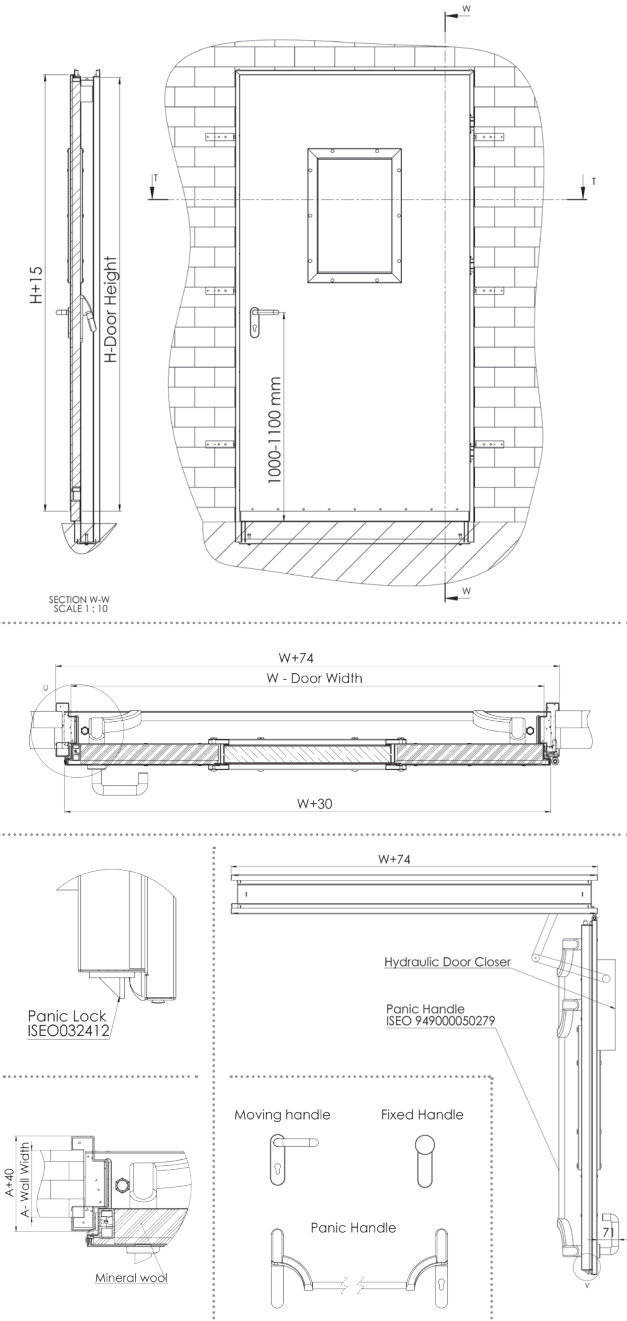
For your assurance of maximum security and the highest quality, choose only original products by rb-doors.

www.rb-doors.com

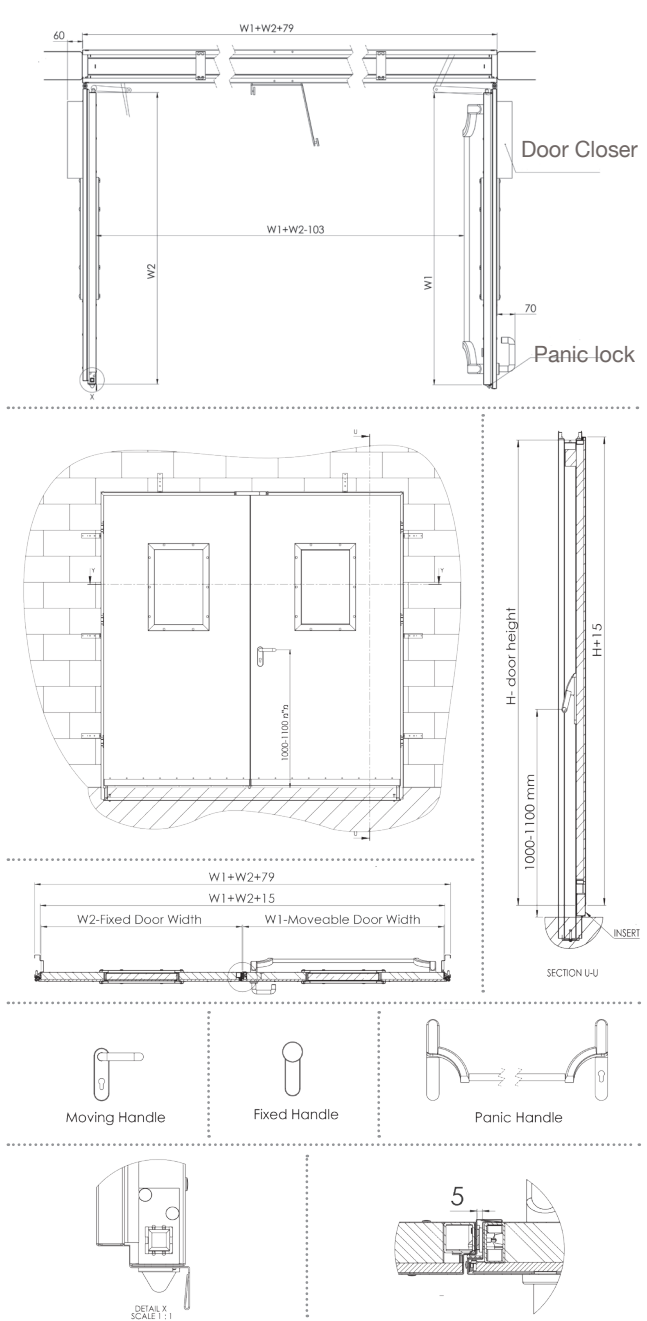
SINGLE/DOUBLE LEAF FIRE DOOR | MODEL FW30

TECHNICAL DRAWINGS

Single leaf Door



Double leaf Door



For your assurance of maximum security and the highest quality, choose only original products by rb-doors. RB-DOORS reserves the right to make changes and improvements to any products described in this document without prior notice.

www.rb-doors.com